

# PORTACOUNT® PRO RESPIRATOR FIT TESTER MODEL 8030

RESPIRATOR FIT TESTING  
YOU CAN TRUST

No other fit tester can quantitatively fit test so many types of respirators—gas masks, SCBAs, respirators, even disposables (for fit testing N95 disposable respirators, see the PortaCount® Pro+ Model 8038 Respirator Fit Tester). The PortaCount Pro Respirator Fit Tester eliminates the guesswork associated with tedious and error-prone qualitative fit test methods. If the mask requires fit testing, count on the PortaCount Pro to provide the fastest, easiest and best OSHA-accepted fit test method.



## PortaCount Pro Respirator Fit Tester Kit Includes

- + Carrying case
- + AC adapter
- + Alcohol supply (enough for ~240 hours of operation)
- + FitPro™ Fit Test Software on CD
- + USB computer interface cable
- + Operation and service manual

For additional software information, see the TSI FitPro+ Fit Test Software Specification Sheet.

## Features and Benefits

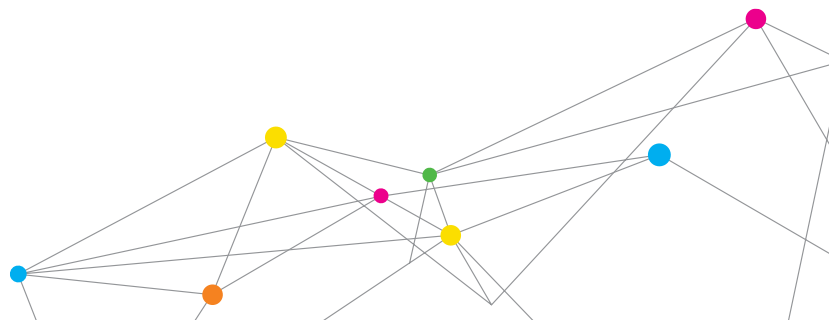
- + Simple and easy to use
- + Stand-alone operation—no external computer allows for quick setup
- + Color touch screen enables operation of the instrument with a touch of a finger, pen, or stylus
- + OSHA-compliant for all respirators, except N95
- + Measures fit factors greater than 10,000
- + Computes respirator fit factor using microscopic particles in ambient air
- + Automates fit testing with FitPro+ Fit Test Software
- + Optional mask sampling adapters allow employees to be tested in their own respirators
- + Software prints fit test cards with fit test report or on ID cards



Air-Met Scientific  
☎ 1800 000 744  
✉ sales@airmet.com.au  
🌐 www.airmet.com.au



UNDERSTANDING, ACCELERATED



## SPECIFICATIONS

### PORTACOUNT® PRO RESPIRATOR FIT TESTER MODEL 8030

#### Fit Factor Range

1 to greater than 10,000

#### Typical Fit Factor Accuracy

±10% of reading

#### Respirator Facepieces that can be Fit Tested

Full-face elastomeric

Half-face elastomeric

NIOSH series-100 filtering-facepiece

NIOSH series-99 filtering-facepiece

NIOSH series-95 filtering-facepiece\*

#### Fit Factor Measurement

Direct measurement of fit factor ( $C_{out}/C_{in}$ )\*\*

#### Dimensions (HWD)

6.75 in. x 8.5 in. x 9.5 in. (17 cm x 22 cm x 24 cm)

#### Weight

Unit Only 5.0 lb (2.7 kg)

With Standard Accessories and Case 16 lb (7.3 kg)

#### Power

Autosensing 100 to 250 VAC, 50 to 60 Hz

#### Flow Rate

Sample 350 cm³/min

Total 1000 cm³/min (nominal)

#### Temperature Range

Operation 32 to 100°F (0 to 38°C)

Storage -40 to 160°F (-40 to 70°C)

#### Alcohol

Hours Per Charge 6 hours at 70°F (21°C)

Alcohol Type 99.5%+ reagent grade isopropyl

#### Carrying Case

Dimensions (HWD) 9 in. x 13.7 in. x 19.5 in.  
(23 cm x 34.8 cm x 49.5 cm)

#### Pass/Fail Setting

User-selectable: 0 to 10,000

#### Factory Recalibration Interval

One year

#### Warranty

Two years on workmanship and materials

#### Minimum PC Hardware Requirements for FitPro+ Fit Test Software

Windows® XP, Windows 7 (32 and 64 bit), or Windows 8 (32 and 64 bit) operating system

Microsoft.Net version 4 (installation software will install Microsoft.Net if necessary) Note – An internet connection is required to install Microsoft.Net

≥ 1 GHz process

≥ 1280 x 800 screen resolution monitor

500 MB free space on hard drive

1 free USB port

CD-ROM reader or internet connection (to install the software)

#### Optional Accessories

Mask Sampling Adapters for select respirator models

\*8038 upgrade required for P1 and P2 respirators.

\*\*Mask leakage is measured simultaneously while test subject moves and breathes.

Model 8038 PortaCount® Pro+ Respirator Fit Tester is patented under U.S. Patent No. 6,125,845.

PortaCount, TSI, and the TSI logo are registered trademarks, and FitPro+ is a trademark of TSI Incorporated.

Windows is a registered trademark of Microsoft Corporation in the United States and/or other countries.



UNDERSTANDING, ACCELERATED

TSI Incorporated - Visit our website [www.tsi.com](http://www.tsi.com) for more information.

**USA** Tel: +1 800 874 2811  
**UK** Tel: +44 149 4 459200  
**France** Tel: +33 4 91 11 87 64  
**Germany** Tel: +49 241 523030

**India** Tel: +91 80 67877200  
**China** Tel: +86 10 8219 7688  
**Singapore** Tel: +65 6595 6388